

# RESEARCHING YOUR FAMILY HISTORY

*A guide to genealogical and local history resources at Napier Libraries.*



*Free image: <http://www.c3teachers.org/blog/tree-2/>*

## Contents:

How we can help	p 3
Before you start	p 4
Getting started	p 5
Where to find other information	p 6
Discovering your whakapapa	p 7
Resources available at Napier Library	p 8
Resources available at Taradale Library	p 10
Other useful resources at Napier Libraries	p 11
Resources held by Napier City Council	p 12
• MTG Archives	p 12
• Napier Cemeteries	p 14
Helpful contacts	p 14
Adoption enquiries	p 15
Further assistance	p 16



*Pā Whakairo, Hawke's Bay, about 1870. Photographer Swan and Wrigglesworth. Collection of Hawke's Bay Museums Trust, Ruawhāro Tā-ū-rangi, 4374 - <https://collection.mtghawkesbay.com/objects/78821>*

## How we can help:

Napier Library has a wide range of resources to help you on your journey of discovery:

- Free internet access for family research.
- We are an affiliated library with [FamilySearch](#) (Church of Jesus Christ of the Latter Day Saints)
- Free access to our subscription websites ([Ancestry](#), [FindMyPast](#) and British Newspaper Archive) within the libraries and links to many other genealogy sites that are also very useful.
- Guides to help you in both general and specific research.
- Genealogy magazines:
  - [Family Tree Magazine](#) (monthly), Napier
  - [Heritage New Zealand](#) (quarterly), Napier and Taradale
  - [New Zealand Genealogist. The](#) (bi-monthly), Taradale
  - [New Zealand Memories](#) (bi-monthly), Napier and Taradale
  - [Who Do You Think You Are?](#) (monthly), Napier

This researching your family history resource includes relevant and useful resources held by Napier Libraries – it is by no means an exhaustive list. Kia manahau!

## Before you start:

*Decide what you want to do* - are you looking for one person, a branch of the family or every ancestor you can find?

*Keep notes and records* - it doesn't matter whether it's on a computer or in a notebook, record what you find and where you find it (e.g. websites, newspapers etc.).

*Talk to as many people in your family as you can* - you never know what letters, diaries or old photos may exist. Ask them about their memories and, if possible, record them.

*Start small* - genealogy can be overwhelming and it's easy to get side-tracked. You can always come back to a different branch of the family another time.



*Marine Parade early 1900s. Photographed by Nelson Stedman. Collection of Hawke's Bay Museums Trust, Ruawharo Tā-ū-rangi, 6750 - <https://collection.mtghawkesbay.com/objects/76686>*

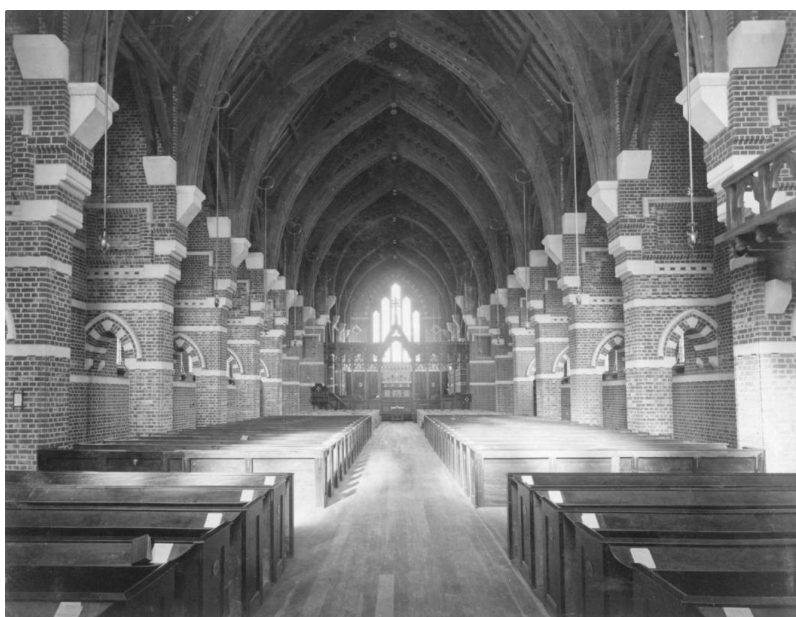
## Getting started:

The best websites to start with are:

- [Ancestry](#) is especially good for electoral rolls, census records, travel and immigration. Remember to tick 'exact to' for the country required (e.g. New Zealand) to access the most likely results first. It also has City & Area Directories which are very useful in tracking past occupants of an address. Only available within the Library.
- [FindMyPast](#) is similar to *Ancestry* and equally good. A very easy site to use it refines your results as you input information. Only available within the Library.
- [FamilySearch](#) is excellent for many records and especially scanned wills and parish registers. Registration with the website is required but there are no charges. Napier Libraries are an affiliated library, providing access to many other records. The affiliated records can only be accessed within the Library.
- [Births, Deaths & Marriages Online](#) from the Dept. of Internal Affairs, is excellent for New Zealand BDMs.
- [Free Births, Deaths & Marriages UK](#) is the UK's equivalent.
- [Free Reg](#) has parish records from the UK and surrounding islands.
- [Papers Past](#) is invaluable for researching people and places in early New Zealand. Remember to put quotation marks around people's names to make searching easier. You can also select certain newspaper regions and timeframes.
- [British Newspaper Archive](#) is an excellent resource and similar to New Zealand's *Papers Past*.

## Other useful websites:

- [Archives New Zealand](#) - especially Archway for military and other records.
- [Cyndi's List](#) – a list of useful genealogy sites.
- [Napier Cemeteries](#) - part of the Napier City Council website, covers all except the Old Napier Cemetery, and older internments at Taradale and Park Island.
- [Hastings Cemeteries](#) - part of the Hastings District Council website and includes Puketapu Cemetery.
- [Knowledge Bank](#) – Hawke's Bay Digital Archives Trust.
- [Scotland's People](#) – find your Scottish ancestors.
- [Varcoe's New Zealand Marriage Index](#) – provided by Otago University.



Interior of St John's Cathedral, Browning St, pre-1931. Photographer unknown. Collection of Hawke's Bay Museums Trust, Ruawhāro Tā-ū-rangi, 2029 - <https://collection.mtghawkesbay.com/objects/79904>

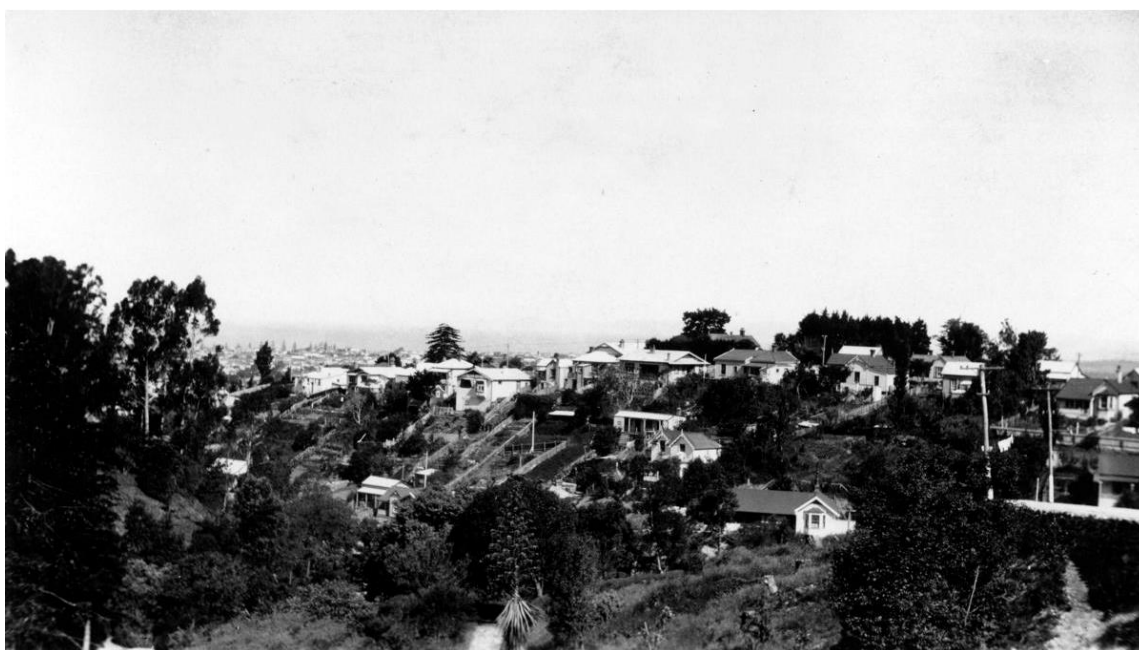


## Where to find other information:

Most libraries have genealogy sections and knowledgeable people to help you. Often they can put you in touch with a specialist person or local group. They will also have their own records, such as local newspapers on microfilm, and usually subscribe to various websites and allow internet access at no, or minimal, cost. Most will have some kind of local history section.

- *Local library* - contact the library in the area you are researching. Most library websites have an enquiry page where you can make a request or ask for help. Also their catalogue and databases may contain links to other websites or local archival material.
- *Local councils* also hold important information. If cemetery records are not available on their website contact their local sexton. Alternatively, funeral firms can also help with certain information.
- *Museums* hold all sorts of records in their archives that they may allow you to browse or search for you.
- *Churches*, both parishes and dioceses, also have their own records. Some individual churches hold their own archives independently of parish or diocese collections
- *Schools* - Many older established schools have substantial records and some have dedicated archivists.
- *National Archives* hold a wealth of information gathered from throughout the country, including historical court records
- *Oranga Tamariki - Ministry for Children* is the best place to start if searching for birth parents or for children who were adopted.

All of these places will have contact details, often with an enquiry page, on their website or will be listed in the phone book.



*Napier Botanical Gardens, Spencer and Enfield Roads, c. 1920s. Photographed by David Williams.  
Collection of Hawke's Bay Museums Trust, Ruawharo Tā-ū-rangi, W162(b) -  
<https://collection.mtghawkesbay.com/objects/78047>*

## Discovering your whakapapa:

Due to the development of New Zealand, tracing your Māori whakapapa can be challenging, especially for adopted persons who may have grown up outside their own iwi.

In connecting to your whakapapa you only need to go back to the mid-1800s through official records and what you and your whānau already know. Once you have found your earliest tīpuna from this period you will need to identify their marae. It's important to remember that a marae's status is unaffected by whether a whareniui, or any buildings, occupy the site, or by their condition. Once you have found their marae you are home and the remainder of your whakapapa can be re-connected with. Local museums can also be a rich source of information and often have very knowledgeable curators who can assist.

It is important to treat all whakapapa with respect as it is deeply connected with the mana of the iwi. Whakapapa also implies a deep connection with the land through tūrangawaewae and, ultimately, to all forms of creation and the wider universe. Whakapapa binds all things together from the stones to the stars.

While tracing your tīpuna back through the 19<sup>th</sup> and 20<sup>th</sup> centuries you may find surnames often changed from one generation to another. It was common practice for children to be given either their father's or mother's first name as a surname, their parent having themselves received the first name of a parent as their own surname.

Also, the main ancestor that a marae comes from can be either male or female. Many descendants from the marriage of Kahungunu and Rongomaiwahine on the Mahia peninsula identify as Ngāti Rongomaiwahine, rather than Ngāti Kahungunu, as they believe her to be of superior lineage.

Official records were instigated over a considerable period of time and it also took some time for new regulations to become standardized. A brief summary of law changes affecting the recording of Māori information is:

- 1867 Māori Representation Act, establishing four Māori parliamentary seats, granting universal suffrage to Māori men 21 years or over. (Became permanent in 1876.)
- 1879, universal suffrage for all males 21 or over, with no requirement to own individual titles of land granted by the Crown (this had seriously hindered Māori ability to vote)
- 1893 Electoral Act, universal suffrage for all women.
- 1911, Māori marriages required to be registered
- 1913, Māori births required to be registered
- 1925, compulsory voter enrollment established
- 1947, first electoral rolls created for Māori seats
- 1975, voters of Māori descent given choice between Māori or General electoral rolls. Previously voters of full or predominantly Māori descent had to be enrolled on the Māori register. If ancestry was shared equally between Māori and Pākehā the voter could choose which roll to be on, and if Māori descent was less than half they were registered on the European (later General) roll.



A study of kowhaiwhai from the 1860s by Horatio Robley. Collection of Hawke's Bay Museums Trust, Ruawharo  
Tā-ū-rangi - <https://collection.mtghawkesbay.com/objects/31689>

## Resources available at Napier Library:

*Genealogy Collection* - this collection has been drawn from our existing reference and heritage collections and has its own code, (pictured) on the spine. It includes guides to genealogical research, family histories, directories, Phillimore atlas, an index of parish registers and books on heraldry. This collection is able to be borrowed.



### *Various microfiche & CD-ROMs -*

- Burial index
- Divorces 1946-1966
- Early Wellington Settlers
- Index to Births 1840-1990
- Index to Death 1848-1990
- Index to Marriages 1840-1990
- International Directories
- Land records
- Military records
- New Zealand Births, Deaths and Marriages  
New Zealand Marriages Index
- New Zealand Burial Locator Vol. 2
- New Zealand Cemetery  
Records
- New Zealand Electoral Rolls (1853-1981)
- New Zealand Registered Ships 1840-1950
- Newspaper extracts
- Shipping records
- Stones Directories
- NZ Biographical Clippings & Index 1890-1988
- Turton's Land Deeds (held in Glass Case)
- War Census (National Registration Act 1915)
- Wises Post Office Directories 1866-1954
- Women named in the Cyclopaedia of New Zealand

### *Transcripts & photocopies -*

- Old Napier Cemetery Monumental Inscriptions 1853-1979
- Old Napier Cemetery Register of Internments 1896 onwards
- Old Napier Cemetery Burial Registers Master Index
- Map of Old Napier Cemetery plots
- Old Napier Cemetery Plot Owners
- Napier Death Register 1859-1895  
(Napier Courthouse Records)
- Hawke's Bay Newspaper Transcriptions (from The H.B. Herald & The H.B. Times)
  - Oct 1860 - Sept 1862
  - Jan 1869 - Dec 1870
  - Jan & Feb 1871
  - Apr, May, Jun, Aug & Sep 1872
  - Contents include BDMs – not all in HB, Port Napier/Ahuriri passenger arrivals & departures, and misc. such as land inquests, electoral rolls, etc.



*Newspaper holdings (paper & microfilm)* - some early papers are held in storage and are unavailable at present. Papers currently available at Napier Library are:

- Hawke's Bay Herald:
  - 1866 Jan-Sep
  - 1877 Jan-Jun
  - 1878-1904
- The Daily Telegraph: 1881-Apr 1999 (some gaps)
- Hawke's Bay Today: May 1999 onwards

We have a dedicated computer for scanning the microfilms. Please ask library staff for assistance.

*Heritage Collection Hawke's Bay* - this is a valuable secondary resource on Napier and Hawke's Bay. Our aim is to collect as much material related to this district as we can. This collection includes family histories, local histories and compiled resources covering most subjects. This collection is for use in the library only.

We hold 17 volumes of the Buildings of Hawke's Bay Index. These are newspaper articles of houses, commercial buildings etc. Please ask staff to view these.

The development of a local histories newspaper collection began in May 1986 with the indexing of The Daily Telegraph for births, deaths and obituaries. Since 2003 this has been supplemented by our Napier & Hawke's Bay Newspaper Index, an extensive collection of clippings covering many different topics and which is searchable on the catalogue. This collection is now being digitized. Please ask staff for assistance in viewing these.

*Heritage Collection Hawke's Bay Māori* - contains crown purchases of Māori land in the early provincial Hawke's Bay, a report on behalf of the claimants to the Waitangi Tribunal, Māori place names of Hawke's Bay, local Māori schools and some whakapapa and Māori history. This collection is inter-filed with the Heritage Collection Hawke's Bay and is for use in the library only.

*Heritage Collection* - this collection is a great authoritative resource, covering all subject matter relating to New Zealand, especially military and social history. Some of the collection is held in retrievable storage and a growing selection is held at both Napier and Taradale libraries. This collection is able to be borrowed. Please reserve any items in retrievable storage you would like to borrow.

## Resources available at Taradale Library:

A growing selection of both Heritage and Heritage Collection Hawke's Bay books, all available for borrowing.

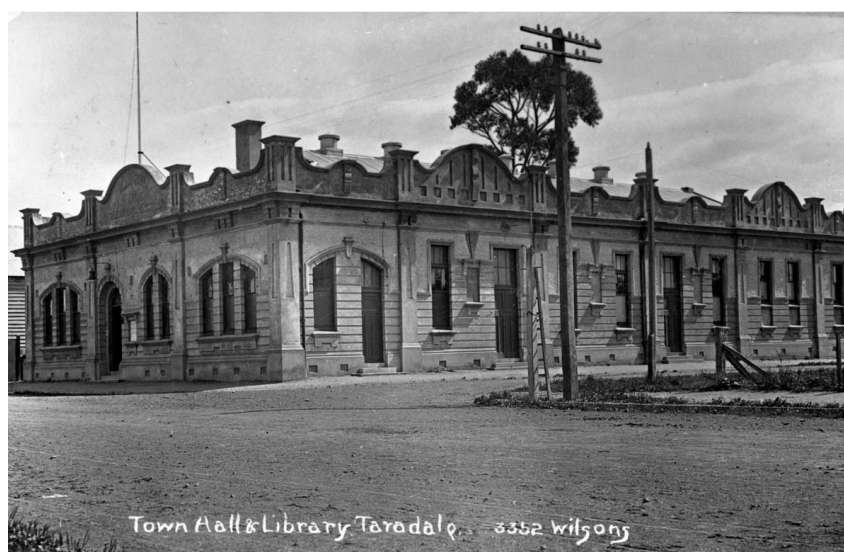
*The Irene Lister Taradale Historical Collection* – collection of Taradale specific information, including:

- Copy of the Diary and later Reminiscences of Rev. Philip Cuthbert Anderson, first vicar of All Saints Anglican Church, 1871-77, and accompanying documents
- 1886 list of householders.
- 1928 petition and counter-petition to become a borough
- Taradale Cemetery plot purchases, headstone transcriptions and burials to 1924
- An A-Z of people, places and events relating to the history of Taradale
- Folders of photos of, and around, Taradale from mid-1800s to about 2000

This collection is for use in the library only.



Taradale Post & Telegraph Office c. 1910. Photographer unknown. Collection of Hawke's Bay Museums Trust, Ruawharo Tā-ū-rangi, 4985. <https://collection.mtghawkesbay.com/objects/83619>



Taradale Town Hall & Library c. 1910-20. Photographer: Wilson's Real Photograph. Collection of Hawke's Bay Museums Trust, Ruawharo Tā-ū-rangi, 17173 - <https://collection.mtghawkesbay.com/objects/85784>

## Other useful resources at Napier Libraries:

*Aerial mapping collection* - previously owned by Land Information New Zealand-LINZ (formerly Department of Lands & Survey), these crown photos cover the Napier, Hastings and the entire Hawke's Bay land district. The years covered are 1936 through to 1978. Some miscellaneous aerial surveys are included, as well as Palmerston North and Fielding. Currently held in retrievable storage

*Deposit plans* - these historical deposit plans were also owned by Land Information New Zealand- LINZ (formerly the Department of Lands & Survey). The early plans were destroyed in the fires after the 1931 Hawke's Bay earthquake, so many of these had to be reproduced. The collection ends at approximately the year 2000. Currently held in retrievable storage.

*Electoral rolls* - from 1982 to the present day the electoral rolls are available in paper source. Rolls for 1853-1981 are on microfiche and also on many genealogy databases such as ancestry.com.

*Glass case* - the collection houses early New Zealand history, many rare, valuable and first editions, with a strong collection of official war history. The Cyclopaedia of New Zealand has biographies of notable New Zealanders in the late 19<sup>th</sup> and early 20<sup>th</sup> century, organized by region. It also contains a separate Hawke's Bay collection.

This collection is divided between Napier and Taradale and is for use in the library only. ID is required to view these items.

*New Zealand Gazette Archive* - currently installed on No. 2 computer at the Napier Library and No. 3 computer at Taradale. To access: this PC/Documents/Re-indexed\_Gazette/HTML and select year. Covers from 1841 to the present day.

*Oral history collection* - interviews with local people on events such as the 1931 Hawke's Bay earthquake and post-quake rebuild. Currently held in retrievable storage.

*Telephone directories* - telephone directories for Hawke's Bay from 1974, currently held in retrievable storage.

*Please ask staff for assistance in viewing any items held in retrievable storage and allow 2-3 days for collection.*

## Resources held by the Napier City Council:

### MTG Archives:

*The following information was kindly compiled by Cathy Dunn, MTG Archives Collection Assistant.*

*Immigration records* - we hold original passenger lists from a number of immigrant ships that arrived at Port Napier between 1863 and 1890. These documents were discovered in the ceiling of the old Napier Police Station in Byron Street before it was demolished in 1962.

The lists include each passenger's name, age, gender, occupation and nationality. Medical journals provide information on passengers' health and details of births and deaths occurring on board the ship.

Another valuable resource is the Barracks Master's Books which recorded immigrants who stayed at the former Army Barracks on Hospital Hill between 1874 and 1884. It contains each immigrant's name, age, defines each as either an adult or child, country they had set sail from, occupation, name of employer in Hawke's Bay, residence in Hawke's Bay, rate of wages, date of arrival to the barracks, date of leaving the barracks, and any remarks.

Names and addresses of prospective settlers can also be found in nomination forms, applications to emigrate, letters requesting servants, nominated immigrant bills, and promissory notes (unconditional promise to reimburse passage cost to Hawke's Bay).

#### *Newspapers* –

- Hawke's Bay Herald 1857-1936 with some gaps. We don't have: 1864, 1865, 1872-4, 1876-1900, 1901 (except 17/6), 1902-24 (except 22/11/24)
- Waipawa Mail 1878-1840 except 1937
- Hawke's Bay Herald-Tribune 1937-1998 complete
- Daily Telegraph 1877; 28/12/1929; earthquake bulletins 4-13 Feb 1931; 1/10/1932; 17/3/1950; 29/9/1962; May 1990-April 1999 except Oct-Dec 1990

#### *Births, deaths & marriages* –

- Old Napier, Napier (Park Island) and Taradale cemetery headstone transcriptions 1853-1981
- Old Napier Cemetery Burial Register and Napier Death Register 1859-1984
- Gail Pope has compiled two folders of ongoing research related to people buried at the old Napier Cemetery.
- Waipawa Mail BDM card index

#### *Almanacs & directories* –

- Hawke's Bay Almanacs 1865, 1874, 1877, 1880-1890 - statistics and information about businesses, organizations and people of the area
- East Coast & Hawke's Bay Directories 1893-96 – streets, alphabetical names and trades, directory together with official, judicial, municipal, and societies directories almanac and gazetteer, 1896.
- New Zealand Post Office Directories 1878, 1916, 1931
- Stone's Wellington, Hawke's Bay & Taranaki Directory 1942
- Telephone Directories 1920s to present
- Street Directories – Hastings 1939/40, Napier & Hastings 948/49

#### *Electoral rolls* -

- Napier 1858, 1865/66, 1875/76, 1925-1983
- Hawke's Bay 1863/64
- Clive 1863/64, 1867/68

*Hawke's Bay histories & biographies* - available for use in the Reading Room are various books and family histories published by local historians.



### Whakapapa resources –

- *The Prentice Papers* – comprise research notes, including whakapapa and correspondence relating to the chapter Wiremu Prentice wrote on the Māori History of Hawke's Bay for J G Wilson's book *History of Hawke's Bay* (1939), as well as his own personal whakapapa. Wiremu Prentice is of Ngāti Raukawa and Kahungunu descent, and a licensed interpreter experienced in Native Land Court hearings.
- *The Buchanan Archive* – includes an alphabetized whakapapa index and whakapapa taken from Māori Land Court minute books and Chadwick's book. It also includes information gathered by J.D.H. Buchanan for his book *The Māori history and place names of Hawke's Bay*. This book is available in the library: [Māori History and Place Names of Hawke's Bay](#). *The* by J. D. H. Buchanan – HCHB 993.46 BUC. Buchanan also has an index to Ripeka's Whakapapa Book.
- *The Brian Williams Whakapapa* – compiled from various unpublished sources, this five volume set includes a large section on CHB iwi.

*Maps, plans & auction posters* - auction posters advertising land for sale, often including names of landowners. Cadastral survey maps show boundaries of land ownership, with section and lot numbers.

*Photograph collection* - many have been digitized and are available to view online:

<http://collection.mtghawkesbay.com/advancedSearch.page.do?collection=3>

Copyright restrictions preclude publication of images published after 1944.

*Restrictions to access* - some access restrictions apply under the Privacy Act, mainly to records that contain sensitive personal information, such as the Hawke's Bay Children's Home records, or that may be commercially sensitive.



*Funeral of Sir Donald McLean, January 1877. Taken from Spencer Road overlooking the Botanical Gardens. Photographer unknown, possibly F. W. Williams. Collection of Hawke's Bay Museums Trust, Ruawharo Tā-ū-rangi, 311 - <https://collection.mtghawkesbay.com/objects/78094>*



## Napier Cemeteries:

The sexton's office at Wharerangi Cemetery holds a wealth of information for all the Napier cemeteries, including maps & aerial photos, plot purchase records, internment registers and a photographic collection of headstones for the Old Napier Cemetery. They also have extra information on their own internal database.



*Taradale Cemetery c. 1933. Photographer unknown. Collection of Hawke's Bay Museums Trust, Ruawharo Tā-ū-rangi, 15777 - <https://collection.mtghawkesbay.com/objects/75424>*

## Helpful contacts:

Hawke's Bay branch of New Zealand Society of Genealogists

[hawkesbay@genealogy.org.nz](mailto:hawkesbay@genealogy.org.nz)

MTG Hawke's Bay Archive Reading Room

[archive@mtghawkesbay.com](mailto:archive@mtghawkesbay.com)

Napier Cemeteries Sexton

(06) 844 7951 or through their online request form

<https://www.napier.govt.nz/services/napier-cemeteries/genealogy-records-request/>

Ngāti Kahungunu Iwi Incorporated

[panui@kahungunu.iwi.nz](mailto:panui@kahungunu.iwi.nz)

(06) 8762718 or 0800 524 864

## Adoption enquiries:

*This information was kindly supplied by an Adoption Resource Assistant with Oranga Tamariki - Ministry for Children.*

*Adopted persons & birthparents* - both have entitlements under the provisions of the [Adult Adoption Information Act, 1985](#).

Adopted Persons over the age of 20 years can apply for a copy of their Original Birth Certificate (OBC). The application is made to Birth Deaths and Marriages in Wellington. Application forms can be downloaded from the BDM website (follow the links for requesting a 'Pre-Adoptive Birth Certificate').

Unless the Adopted Person is born after 1986 – the Act dictates that the OBC is issued to the Adopted Person by a 'nominated counsellor.'

There are named Independent Counsellors in the Community – or the Adoption Services of Oranga Tamariki - Ministry for Children can provide this Service.

Once in receipt of their OBC – Adopted Persons are also entitled to:

- Information about their birth, Birth Parents and adoption held in Oranga Tamariki records
- Assistance in tracing the persons named on their OBC
- Assistance in making contact

*Birthparents* - birthparents can make a Section 8 application. This is an application to have their adult son or daughter traced and contacted on their behalf.

*Adopted Persons and Birthparents can seek information and support to access their statutory entitlements from their local Adoption Services of Oranga Tamariki – Ministry for Children.*

*Enquiries from other persons regarding adoptions* - Direct Descendants of a deceased Adopted Person - can make application for a print-out of the Original Birth Entry under the provisions of Section 76 of the [Birth Deaths and Marriages, and Relationships Act](#).

- The print-out can be issued if all the parties related to the birth and adoptions are deceased.
- The application is made to the Birth Deaths and Marriages in Wellington.
- The most appropriate reason for making a Section 76 application – is 'for Family Tree purposes.'
- There will be a cost (BDM staff have to search and confirm that all parties are deceased and they charge for this).

For further information contact BDM via 0800 22 52 52 and ask to speak with someone that works with 'Adult Adoption.'

Another option that can be considered is a Section 23 application (perhaps for an Adopted Person, Birth-siblings etc.).

*A Section 23 application under the provisions of the Adoption Act 1955* - this is an application to view Court Adoption records under 'special grounds'. The Court does not consider 'natural curiosity' (or for family tree purposes) as sufficient special grounds.

The application should be made to the Family Court nearest to where the applicant is living – regardless of where the birth or adoption took place.

Applicants should give thought to their special grounds. They should provide the fullest details known about the adoption as well as the information sought.

There is no cost to make a Section 23 application (and there is no need for a lawyer) but it can take time.

The Court can make their decision on receipt of the application – but they may choose to request a 'Social Worker's report' from the Adoption Services (of Oranga Tamariki – Ministry for Children).

Persons seeking further information about making an application (and possible special grounds) can seek advice and support from their local Adoption Services of Oranga Tamariki – Ministry for Children.



*Pā at Redcliffe (or possibly Pā Whakairo Waiohiki), 1865. Photographer unknown. Collection of Hawke's Bay Museums Trust, Ruawharo Tā-ū-rangi, 384 - <https://collection.mtghawkesbay.com/objects/75651>*

### Further Assistance:

We hope you enjoy discovering your family's rich history. If you would like any help finding your way through our resources, we have a [Research Enquiry](#) service available, or you can ask our friendly library staff.

The Research Team  
Napier Libraries  
[www.napierlibrary.co.nz](http://www.napierlibrary.co.nz)

