

# HOW TO DO LOCAL HISTORY

*A guide to local history resources at Napier Libraries*



*The ink and watercolour sketch by James C Collins shows the early development of Napier's centre; business premises stand opposite a marshy-looking field with houses in the distance. The artist's caption reads 'Emerson Street – Napier 1860 – Bank of New Zealand in foreground.'*

*Alexander Turnbull Library, Ref: B-156-007.*

## Contents:

Introduction	p 3
First steps	p 4
Primary vs secondary resources	p 5
Guides to research	p 6-11
Māori guides to research	p 12
Local history resources @ Napier Libraries	p 13-17
Other useful websites	p 18-19
A-Z of other useful resources	p 20-23
Further assistance	p 23

## Introduction:

Ngāti Kahungunu trace their origins to the Tākitimu waka, which arrived in Aotearoa from Rarotonga around 1100-1200 AD.

Tamatea Ariki Nui, the captain of Tākitimu, settled in Tauranga, and is buried on top of Mauao, called Mount Maunganui today. Tamatea Ariki Nui had a son called Rongokako, and he had a son called Tamatea Pokai Whenua Pokai Moana, which means “Tamatea explorer of land and sea.”

It is from Tamatea Pokai Whenua Pokai Moana that we have the longest place name, located at Porongahau – “Taumatawhakatangiāhangakōauauatamateaturipukakapikimaungahoronuku pokaiwhenuakitānatahu” where Tamatea Pokai Whenua Pokai Moana played a flute to his lover.

It is the son of Tamatea Pokai Whenua Pokai Moana named Kahungunu that Ngāti Kahungunu comes from. Kahungunu travelled widely and eventually settled on the East Coast. His grandson Rakaihikuroa, migrated with his son Taraia, their families and followers, from Nukutaurua on the Māhia Peninsula to Heretaunga (Hawke’s Bay area). Eventually, Heretaunga was brought under the control of his people, who became the first Ngāti Kahungunu as we know it today in Hawke’s Bay.

Ahuriri was an important site of Māori occupation with Te Whanganui-a-Orotū; the inner harbor; being a valued source of food. It is here that Ngāti Kahungunu were one of the first Māori tribes to come into contact with European settlers.

In October 1769, Captain Cook first landed in Napier, before continuing to sail down the East Coast on the HMS Endeavour. Cook named the Hawke’s Bay after Sir Edward Hawke, First Lord of the Admiralty. In the 1830’s traders, whalers, missionaries and other forerunners of a permanent European settlement began to appear.

Originally known as Ahuriri, Napier was founded by the government in 1855, and is Hawke’s Bay’s oldest town. The name “Napier” commemorates Sir Charles Napier, the commander-in-chief of British forces in India.

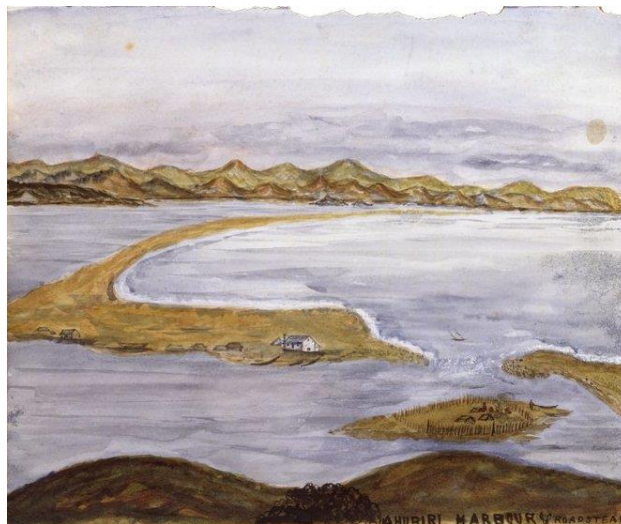
Napier Library has a wide range of resources to help you in your journey of discovery as you learn about our rich history.

This local history resource includes relevant and useful resources on Napier and Hawke’s Bay held by Napier Libraries – it is by no means an exhaustive list. Kia manahau!

## First steps:

Starting a local history research project can be an exciting feeling, followed quickly by a “where do I start?” panic. It’s important to plan your research project to avoid having that overwhelming feeling. Here are our top tips to get started:

- Work from the known to the unknown. It’s best to follow a process of basic facts offered by available evidence.
- Use reliable research guides.
- Decide on an approach to identify key dates, themes, and personalities. It’s best to work based on key themes and subjects rather than a chronology.
- Be methodical in your work and record keeping, as systematic note taking is the key to success. It is universal practice to use a pencil to take notes when primary sources are consulted, this is to safeguard these collections for the future.
- Record the sources searched, even if the results are negative. Always acknowledge sources and indexing.
- Search every possible spelling of key words, thinking laterally will help.
- Look at international or national determinates like war, immigration policies, or economic difficulties.
- Also look at physical determinates like rivers, mountain ranges, which may isolate communities.
- Talk to the people who live in your town – you never know what interesting information you may turn up!
- Visit your local library, museum or archive.<sup>1</sup>



*Ahuriri harbour and roadstead. [1850s]. Rhodes, Joseph, 1826-1905 Alexander Turnbull Library.  
Ref: A-159-033. Likely to be a view from the artist's own home, Milton Grange Estate,  
one of the earliest homes and farms on top of Bluff Hill, Napier.*

---

<sup>1</sup> Top tips taken from: Fowler, Simon. (2000). *Getting started in local history: where to begin*. Local History Magazine, Volume 70.

## Primary vs secondary resources:



[Barraud, Charles Decimus] 1822-1897: *The barracks, Napier*. [ca 1866].  
Ref B-004-026 Collection of Hawke's Bay Museums Trust, Ruawhāro Tā-ū-rangi.

### Primary sources:

These are records that were created at the time of an event, e.g. birth date would be a birth certificate. They are the cornerstone of information and depend on the survival of local records, many are also often unpublished.

#### Examples of written primary sources:

- Archives (superseded bodies' and boards, e.g. river, road, pest destruction, hospital)
- Cemeteries
- Correspondence
- Diaries, travelogues
- Ephemera: paintings, photos, souvenirs, postcards, stamps
- Land holdings
- Local authority archives and holdings
- Maps and plans (early maps, particularly Appendix to the Journal of the House of Representatives JHR)
- Minute books
- National archives
- Newspapers (most frequently consulted primary sources) provide a window on the past, especially in the 19<sup>th</sup> century where 'local correspondents' were writing for local newspapers, although there are limitations and sources can need verification. The first newspaper published in New Zealand was the New Zealand Gazette on 18 April 1840.
- Street directories (Wise's stones Otago is a rich primary source).

#### Examples of non-written primary sources:

- Oral history (a treasure house for researchers, especially in smaller rural communities)
- Paintings, especially for the early colonial landscape from the late 1850's, which can be used to verify other sources of information
- Photographs for fashion and faces (see [Photography in New Zealand: a social and technical history](#) by Hardwicke Knight – HC770.9931 KNI). Turnbull, Hocken and National Museums have well-indexed photographic collections.

### Secondary sources:

A secondary source is a record that was created after an event occurred, e.g. a marriage certificate would be a secondary source of a birth date. They should not be overlooked. When selecting secondary works, it is best to consult as many histories as possible.

## Guides to research:

Napier Libraries have a wide range of guides and resources to help you on your local history research journey. These are our picks to help get you started:



[Archives of the provinces of Wellington and Hawke's Bay](#) by National Archives of New Zealand (1955) – HCHB 016.9936 NAT

This title introduces the province of Hawke's Bay and includes a handy timeline of settlement:

- 1850 settlers in Hawke's Bay petitioned to the House of Representatives for separation from the Wellington Province
- 1851 the first government land purchases were made by Donald McLean
- 1853 the number of settlers rapidly increased
- 1855 the town of Napier was laid out and sold (formerly known as Ahuriri, and is Hawke's Bay's oldest town)
- 1857 the town of Clive was laid out and sold
- 1858 Hawke's Bay was the first province established under The Electoral Districts Act of 1858
- 1860 Waipawa and Havelock North were established
- Early 1860's Wairoa was established
- 1873 the town of Hastings was laid out and sold
- 1877 Waipukurau was established
- After 1872 Norsewood and Dannevirke were settled by immigrants.

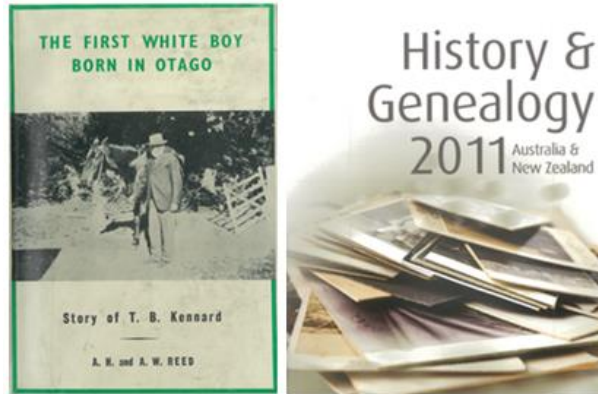
[Developing a research culture: a guide for everyone](#) edited by Mary Panko (2014) – HC 001.4 DEV

This is a short and easy read, focusing on framing your approach and research methods, ethics, data gathering, strategy, and methods selected to gather information.

[Early days in New Zealand](#) by John A. Lee (1891-1982) - HC 993.02 LEE

John A. Lee was one of New Zealand's avowed political socialists. This title covers the changes in New Zealand way of life and customs through photographic history.





[\*First white boy born in Otago, the: the story of T.B. Kennard\*](#) by J. H. Beattie - HC 993.02 KEN

Good reasons to read this book include:

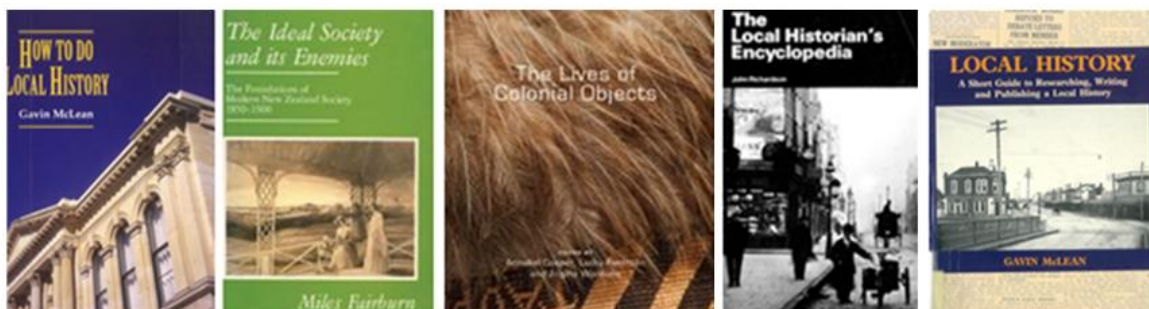
- it pictures Central Otago in its early stages
- brings you face to face with the pioneering days and gold rushes
- describes the colonial life of Dunedin
- importantly explains the Māori reactions to the impact of civilisation.

Kennard died at Waikouaiti, age 95, and it was fortunate that the first white boy born in Otago has passed down his memorable story to succeeding generations.

[\*History and genealogy 2011: Australia and New Zealand\*](#) compiled by Alan Phillips and Rosemary Kopittke - GN 929.1 HIS

This is a research directory which examines a broad range of topics, including family sources, how to plan and organise your research, numerous tips and tricks, also including a timeline of immigration to New Zealand:

- 1870's Vogel scheme
- Military settlement scheme
- 1881 Dalmatians (Croatians)
- 1900-1945 trans-Tasman migrants
- 1914-1935 overseas settlement schemes
- 1935-1970, 1944- Polish refugees
- 1948-1954 British child migrants
- July 1947- A full assistance scheme which ran for 30 years. New Zealand needed people with worthy skills and they were then bonded for two years to the New Zealand government (this includes over 6,000 Dutch immigrants).
- Both the Auckland Central Library Research Centre along with the Sir George Grey Special Collections Centre, Tā Hori Kerei - Ngā Kohinga Taonga Whakahirahira hold extensive records.
- Using Troopers war diaries and letters
- The use of Government gazettes for occupations, shipping, passenger lists, shipwrecks, trial records, an example of this is the court case of the the first murder in Napier on 19<sup>th</sup> of January 1866, when Richard Farrell was accused of killing Thomas Foan.



[How to do local history: research, write, and publish: a guide for historians and clients](#) by Gavin McLean - GN 993.0072 MCL

This book is a brief and lively introduction to historical research, writing and publishing by a leading historian. This book explains how to use books and archives, and is full of practical tips on 'reading' the landscape, oral history, and on using illustrations effectively.

[Ideal society and its enemies, the: the foundations of modern New Zealand society, 1850-1900](#) by Miles Fairburn - HC 993.02 FAI

This title explains the characteristics of settler society of nineteenth century New Zealand, who regarded this country as 'the land of promise'. They were forced to reinterpret their early version as they adjusted to a society facing severe problems.

[Lives of colonial objects, the](#) edited by Annabel Cooper, Lachy Paterson and Angela Wanhalla - HC 306.0993 LIV

This is a sumptuously illustrated and highly readable book, covering 50 essays by historians, archivists, curators and Māori scholars on a huge variety of objects.

[Local historian's encyclopedia, the](#) by John Richardson - GN 941.003 RIC

This encyclopaedia sets out to give the local history researcher basic information in a wide range of subjects; from land, administration, archives; and although it is from a Great Britain perspective, it still has relevance.

[Local history: a short guide to researching, writing and publishing a local history](#) by Gavin McLean - GN 993.10072 MCL

Gavin McLean is the 'go to' resource for teaching the importance and significance of local history.





[\*New Zealand beginner's guide to family history research\*](#) by Anne Bromell - GN 929.1 BRO

This is an extremely useful resource as are any of Anne Brommell's guides. It covers 'frequently asked questions' and where to find the answers. Here are some of our favourite FAQs:

***What were the names of their children?***

- Death registration certificates- will provide the names of deceased
- Funeral notices- can sometimes mention names of the children
- Church registrations for baptisms
- Electoral rolls for children of voting age living at the same address

***What were the names of their parents?***

- Birth registration certificates
- Church registers for baptisms
- Marriage registration certificates
- Death certificates

***What was the name of their spouse?***

- Marriage registrations certificates
- Church registers- marriage registers
- Electoral rolls for people with the same name at the same address
- Street directories for people with the same name at the same address
- Death registrations certificates will include the name of their spouse
- Death notices in newspapers can sometimes mention names of children

***Can I get hold of a birth, marriage or death information?***

- Birth, Baptism and Adoption
- Marriage and Divorce
- Death and Burial

***Where were they buried?***

- Cemeteries databases
- Tombstone transcripts
- Church registers, burial entries

- New Zealand cemetery records
- Christchurch burial books
- Cremations

***Can I find a will or probate for someone?***

- Deceased estates

***Can I find out where they lived?***

- Street directories will list an individual if they were the main resident
- The electoral roll will be of use if eligible to vote
- Land resources can help to identify where they owned land

***What was the school or church they attended?***

- School records and centenaries
- Church records and histories

***Are there any details of hospitals or children's' homes they attended?***

- Hospitals and Orphanages

***Is there any information about their work or company?***

- Employment records
- Business information

***What other biographical information can I find?***

- Cyclopaedias published in the early 20<sup>th</sup> century
- War records try 'New Zealanders' at war guides
- Newspapers
- Alexander Turnbull biographies
- Dictionary of New Zealand Biography

***Can I get hold of police or court records?***

- Department of Justice

***What can I find about someone who was in the war?***

- Our New Zealanders at war on microfiche

[Tracing family history in New Zealand](#) by Anne Bromell - GN 929.1 BRO

[Tracing family history overseas from New Zealand](#) by Anne Bromell - GN 929.1 BRO

These two companion books provide information and practical advice that enable enthusiasts to extend their research both within and outside New Zealand.



[New Zealand birth certificates](#) by Paul Moon - HC 993.02 MOO

Lists key certificates relating to New Zealand from Tasman's Map of 1642 to the South Pacific Nuclear Treaty in 1985.

[Pākehā settlements in a Māori world: New Zealand archaeology, 1769-1860](#) by Ian Smith - HC 993.02 SMI

A vivid account of early European experience, through material evidence offered by the archaeological record. As European exploration in the 1770s gave way to sealing, whaling and timber-felling, Pākehā visitors first became sojourners in small, remote camps, then settlers scattered around the coast. Over time, mission stations were established, alongside farms, businesses and industries, and eventually towns and government centres.

[Shaping of history, the: essays from the New Zealand journal of history, 1967-1999](#) edited by Judith Binney - HC 993 SHA

This collection of essays from leading historians on political and cultural histories from New Zealand, explores the country's past. Writers such as Tipene O'Regan and Alan Ward analyze New Zealand's Treaty of Waitangi, which intended to establish a peaceful relationship between European settlers and the Maori indigenous population. Judith Binney and Claudia Orange discuss Maori language traditions and histories.

[Studying New Zealand: a guide to sources](#) by G.A. Wood - HC 993 WOO

This title looks at electronic databases, libraries, research collections, and specialist libraries (The McNab Collection, Knox College Archives, The Russel Duncan Collection), including Alexander Turnbull (1868-1918) and Dr Thomas Hocken (1836-1910) who provided the nucleus of New Zealand's outstanding research libraries.

[Turning points: events that changed the course of New Zealand history](#) by Paul Moon - HC 993 MOO

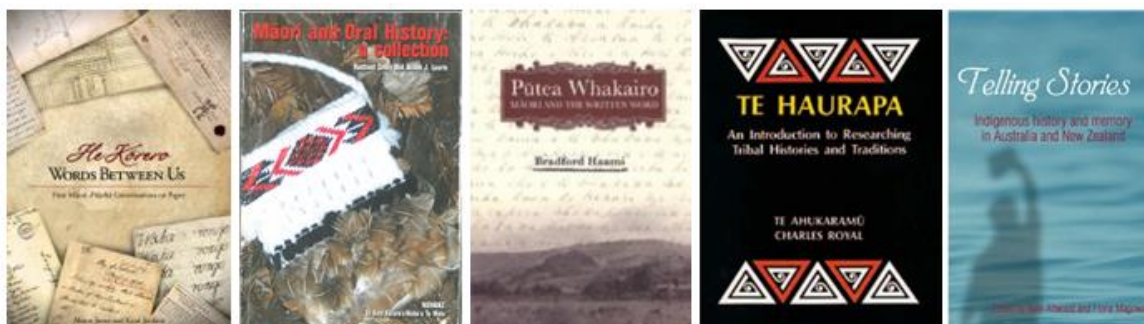
A lively history of New Zealand, by leading historian Paul Moon, who identifies twenty turning points that mark a defining moment in the development of this country.

[Where they lived: studies in local, regional and social history](#) by W. J. Gardner - GN 993.0072 GAR

In this study the author gives priority to local, regional and social history and reflects with examples. It includes brief case studies of immigration, region and locality.

## Māori guides to research:

Napier Libraries have a great range of titles to help you connect with iwi and discover local history. These are our picks to help get you started:



[He Kōrero / words between us: first Māori-Pākehā conversations on paper](#) by Alison Jones and Kuni Jenkins - HMC 993.01 JON

He Kōrero traces Māori engagement with handwriting from 1769 to 1826. Through beautifully reproduced written documents, it describes the first encounters Māori had with paper and writing and the first relationships between Māori and Europeans in the earliest school.

[Māori and oral history: a collection](#) edited by Rachael Selby and Alison Laurie - HMC 993.00499442 MAO

This offers an introduction to researching tribal histories and traditions. It contains a selection of papers previously published in New Zealand between 1989 and 2003.

[Pūtea whakairo: Māori and the written word](#) by Bradford Haami - HCM 993.00499442 HAA

This valuable reference work offers an insight into preserving and safeguarding precious family documents, letters, diaries and genealogies for future generations. It covers the years 1848-1978.

[Te haurapa: an introduction to researching tribal histories and traditions](#) by Te Ahukaramu, Charles Royal - HMC 929.1 ROY

Offers straightforward advice for Maori people on how to gather historical knowledge and present it in a way that is useful for other researchers and members of whanau, hapu and iwi.

[Telling stories: indigenous history and memory in Australia and New Zealand](#) edited by Bain Attwood and Fiona Magowan - HMC 993.00499442 TEL

Telling Stories looks at the place of life stories and of memory in history: who tells life stories, the purpose for which they are told, the role of story and history in the politics of land claims, and the way language impacts on research and writing. The contributors write about 'stories for land' in the oral narratives of the Maori Land Court; the 'saga of Captain Cook'; examine Maori land law, and explore the questions arising when different kinds of history meet: different kinds of evidence, from different cultures, sometimes telling the same story from conflicting perspectives.

## Local history resources @ Napier Libraries:

Napier Libraries has a wealth of information on local history - Māori resources, heritage collections and databases as well as newspaper holdings all being a rich sources of local records, offering insights into social conditions of the time. Many records such as land records of schools and hospitals were destroyed in the fires after the 1931 earthquake.



*The photograph has been taken from Napier Hill looking south west, possibly in 1867. The street that runs across the photograph in the foreground is Browning Street. The Bank of New Zealand stands on the corner of Browning Street and Hastings Street. Photographer, Swan and Wrigglesworth. Collection of Hawke's Bay Museums Trust, Ruawhoro Tā-ū-rangi, 3314.*

## **Kohikohinga Māori - Heritage Māori Collection & Ngāti Kahungunu - Heritage Hawke's Bay Māori Collection**

The Heritage Māori Collection is available to borrow at both Napier and Taradale, with the Heritage Hawke's Bay Māori Collection available as reference only at Napier.

- Bilingual material
- Biographies of Māori people
- Crown purchases of Māori land in early provincial Hawke's Bay
- Māori language instruction and Te reo Māori dictionaries
- [Māori place names of Hawke's Bay](#) by J. D. H. Buchanan - HCHBM 993.46 BUC
- Material by or relating to Tangata Whenua, Ngāti Kahungunu
- Politics with a Māori focus
- Tribal history, pre-European New Zealand history, and modern history from a Māori viewpoint
- Resources relating to Māori customs and protocol; mythology; genealogy; proverbs; music; dance; education; health and medicine; arts and crafts; design; carving; moko; spirituality
- Resources relating to the Treaty of Waitangi and the Waitangi Tribunal, with reports on behalf of claimants



- Whakapapa (some) [Nga taumata: he whakaahua o Ngati Kahungunu = a portrait of Ngati Kahungunu: 1870-1906](#) by Ngāti Kahungunu - HCHBM 993.00499442 NGA
- Works published in Te reo Māori including fiction, poetry, or picture books.



*The official opening of the Napier tramway service in September 1913 along Shakespeare Road, Photographer, unknown. .Collection of Hawke's Bay Museums Trust, Ruawharo Tā-ū-rangi, 2673.*

### **Aerial mapping collection**

This was previously owned by Land Information New Zealand (LINZ, formerly Department of Lands & Survey). These crown photos cover the Napier and Hawke's Bay land district. It is accompanied by an air photo index which contains NZMS cadastral sheets in cloth showing boundaries. The years covered are 1936 through to 1978.

### **Deposit plans**

These historical deed plans for blocks of land were also owned by Land Information New Zealand (LINZ). The early plans were destroyed in the fires after the 1931 earthquake, so many of these had to be reproduced. The collection ends at approximately the year 2000.

### **Heritage Collection**

This collection is a great authoritative resource, covering all subject matter relating to New Zealand, especially history and social history, and a strong collection of official war history. The Cyclopaedia of New Zealand has biographies of notable New Zealanders in the late 19<sup>th</sup> and early 20<sup>th</sup> century, organised by region.

### **Heritage Collection Hawke's Bay**

This is a valuable secondary resource on Napier and Hawke's Bay. Our aim is to collect as much material related to this district as we can. This collection includes family and local histories as well as compiled resources covering most subjects.

### **Irene Lister Historical Archive**

Located at Taradale this is a small collection of photographs, indexed records of Taradale people with births, marriages, and deaths, articles about Taradale people, events, buildings, cemetery records and private collections.





*Collins, James C, active 1860s. Collins, James C: Tennyson St Napier 1860. Ref: B-156-008. Alexander Turnbull Library, Wellington, New Zealand. /records/23171231.*

### **Microfiche**

- Burial index
- Divorces- 1946-1966
- Index to Births 1840-1990
- Index to Death-1848-1990
- Index to Marriages-1840-1990
- International Directories
- Land records
- Military records
- New Zealand cemetery records
- New Zealand electoral rolls 1853-1981
- Newspaper extracts
- Shipping records
- Stones directories
- Turnbull Library's New Zealand biographical clippings
- Turton's Land deeds
- Wises Post Office Directories 1866-1914
- New Zealand Burial locator
- New Zealand Gazette Archive available holdings, 1841-onwards covering HB land schedules, to access go to: menu-utility-windows explorer-documents-re-indexed gazette
- New Zealand Marriages 1836-1956.

### **Newspaper Index Archive**

A collection of Napier and Hawke's Bay newspaper clippings, which is searchable on the library catalogue. The Daily Telegraph is indexed for birth, deaths and obituaries as well as articles of local significance.



*An early image of Westshore and Port Ahuriri taken from Hospital Hill. Gough and Māori Island are visible as separate land masses before reclamation of the area and the development of West Quay. Ships are visible moored at the Iron Pot. The Western Spit has few if any buildings on it. Photographer unknown Date, 1863. Collection of Hawke's Bay Museums Trust, Ruawharo Tā-ū-rangi, 6752*

### **Newspaper holdings on microfilm**

- The Daily Telegraph - all holdings from 1881 - Apr 1999, with some gaps.
- Hawke's Bay Herald – 1877 to 1904.
- Hawke's Bay Today – May 1999-

### **Newspaper holdings in paper source**

- The Daily Telegraph – July 1878 – 1934, with some gaps.
- Hawke's Bay Herald – 7 January 1865 – 1933, with some gaps.

### **Oral histories**

Interviews with local people on events, for example the 1931 Hawke's Bay earthquake, post-quake rebuild, lawyers and community leaders.

### **Telephone Directories**

Hawke's Bay directories from 1974.

### **Databases**

[Ancestry.com](http://Ancestry.com) – Ancestry Library Edition brings the world's most popular consumer online genealogy resource. Sources such as census, vital records, immigration records, family histories, military records, court and legal documents, directories, photos, maps and more with updates and new content continually being added.

Please first [login through the library online catalogue](#), login, then click home, then click on the database page link and then click on the Ancestry link. You must repeat this process every time you want to access the database.

[British Newspaper Archive](#) - You can gain access to the British Newspaper Archive at Napier and Taradale Library. This is similar to New Zealand's Papers Past and is an excellent resource for genealogy or general research. Only available for use within the library.

[FamilySearch](#) - FamilySearch is bursting at the seams with great records from across the world including church, vital, census, land, probate, military and immigration records, as well as many other types of records and histories that can help you uncover your family tree. Napier Libraries are an Affiliate Member. You will need to sign up to the FamilySearch site the first time you use it and log in each time you use the site.

[Find My Past](#) – Find My Past makes original historical documents available to search online so that you can explore a collection of over two billion records, find your ancestors, and trace your family tree from the comfort of your local library. Only available for use within the library.

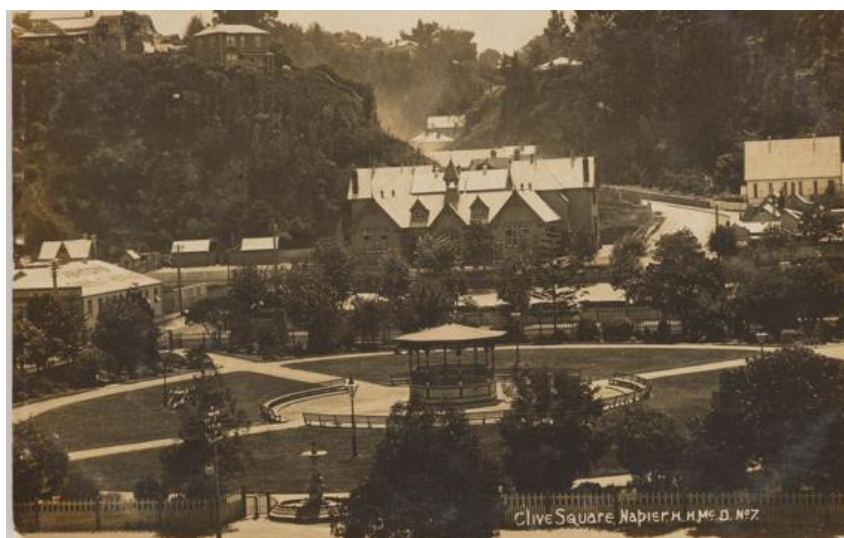
[Māori Land Court Minute Book Index](#) - The Māori Land Court Minute Book Index (MLCMBI) provides quick and easy access to over 1,100 hand written minute book records which were made between 1865 and 1910, from the Taitokerau, Waikato-Maiapoto, Tairāwhiti, Waiariki, Aotea, Takitimu, and Waipounamu Māori Land Court. The MLCMBI database was created by the University of Auckland Library and is hosted exclusively by The Knowledge Basket.

[New Zealand History Collection](#) - Over 30 years of award-winning history publishing combines into an authoritative resource of life on these islands, from earliest beginnings to present day. Includes the ability to keyword search across all titles.

Please first [login through the library online catalogue](#), login, then click home, then click on the database page link and then click on the New Zealand History Collection link. You must repeat this process every time you want to access the database.

[PressReader](#) - PressReader delivers an endless stream of top news stories to read, discuss and share. Get full issues of thousands of newspaper and magazines from around the world just as they appear in print.

Please first [login through the library online catalogue](#), login, then click home, then click on the database page link and then click on the PressReader link. You must repeat this process every time you want to access the database.



*Clive Square, Napier, 1900-1910, Napier, maker unknown.  
Gift of Patricia M. Mitchell, 1989. Te Papa (PS.000792)*

### Other useful websites:

[Archives New Zealand](#) - Archives New Zealand preserves and protects more than seven million official records, from 19th century treaties to 21st century documents and data.

[Commonwealth War Graves Commission](#) - the armed forces of the British Empire during the First and Second World Wars. You can find war dead, cemeteries and memorials, and discover the CWGC archive.

[Hawke's Bay Earthquake](#) - This site is dedicated to all those who lost their lives, and includes lists of casualties and injured.

[Index New Zealand](#) - Index New Zealand is a searchable database that contains abstracts and descriptions of articles from more than 1,000 New Zealand periodicals and newspapers published from the 1950s to the present day.

[Māori Maps](#) - Find your way to the tribal marae of Aotearoa New Zealand - through maps, information and photographs - through the digital gateway of Māori Maps.

[Matapihi](#) - Matapihi DigitalNZ is a search site for all things New Zealand, connecting you to reliable digital collections from libraries, museums, galleries, and more.

[MTG Hawke's Bay Tai Ahuriri](#) - Hawke's Bay's award-winning museum, home of the region's tāonga and other treasures.

[National Library of New Zealand](#) - The National Library has a wide range of collections including books, magazines, audio, websites, Turnbull archival collections, and more.

[New Zealand Electronic Text Collection / Te Pūhikotuhi O Aotearoa](#) - significant New Zealand and Pacific Island texts and materials held by Victoria University of Wellington Library.

[New Zealand Gazette Te Kāhiti-o-Aotearoa](#) - the official Government newspaper and authoritative journal of constitutional record, published since 1841. It contains official commercial and government notifications that are required by legislation to be published.

[New Zealand Heritage List / Rārangī Kōrero](#) - information about New Zealand's significant heritage places, including Ngā Manawhenua o Aotearoa me ōna Kōrero Tūturu / National Historic Landmarks.

[New Zealand History / Nga korero a ipurangi o Aotearoa](#) - covers a wide range of topics including culture and society, politics and government, and New Zealand at war.

[Ngāti Kahungunu Iwi Inc.](#) - This site includes information on governance, operations, our people, and events.

[Papers Past](#) - Papers Past includes a wide range of digitised material, including New Zealand and Pacific newspapers from the 19th and 20th centuries, magazines and journals, letters and diaries, and Parliamentary Papers.

[Papers Past Newspaper Open Data Pilot](#) - The data includes a range of newspapers from 1839-1899, including Hawke's Bay titles such as the Bush Advocate, Daily Telegraph, Hastings Standard, Hawke's Bay Herald, Hawke's Bay Times and Hawke's Bay Weekly Times.

[Retrolens Historical Image Resource](#) - Retrolens is made up of a treasure trove of aerial photographs that have been taken since 1936 through to 2005. The value of these images is in showing change across New Zealand.

[Te Ara New Zealand Encyclopedia](#) - Te Ara is the complete guide to our peoples, environment, history, culture and society.

[Te Kāhui Māngai](#) - a useful tool for anyone to find out basic information about iwi, hapū and marae.

[Te Papa](#) - The Museum of New Zealand Te Papa Tongarewa is New Zealand's national museum.

[Treaty of Waitangi](#) - Te Tiriti o Waitangi is not a single large sheet of paper but a group of nine documents: seven on paper and two on parchment. Together they represent an agreement drawn up between representatives of the British Crown on the one hand and representatives of Māori iwi and hapū on the other.

[Trove](#) - brings together content from Australian libraries, museums, archives, repositories and more.

[Twenty-Eighth Māori Battalion](#) - covers a range of topics from the Battalion's formation in 1939 to its eventual disbandment in 1946.

[Waitangi Tribunal Te Rōpū Whakamana I te Tiriti o Waitangi](#) - a permanent commission of inquiry that makes recommendations on claims brought by Māori relating to Crown actions which breach the promises made in the Treaty of Waitangi.

[WW100 New Zealand](#) - marks the First World War centenary from 2014 to 2019 (when our troops came home), including duty and adventure, the ANZAC connection, transition - a national war effort, the grind of war, the darkness before the dawn, and finding our way back.



*Marine Parade, Napier, circa 1914, New Zealand, by Frederick George Radcliffe. Gift of Ian Devon and Joanne Mackay in memory of James Aloysius Devons, 2013. Te Papa (PS.003452).*



## A-Z of other useful resources:

### [Alexander Turnbull Library](#)

[Appendices to the journals of the House of Representatives](#) - (AJHR's) after 1878 they contain a wealth of information, including edited reports on their districts and detailed statistics.

**Architecture** – e.g. [Old New Zealand houses 1800-1940](#) by Jeremy Salmond - HC 728.0993 SAL

**Bibliographies** – [Bibliography of Napier and Hawke's Bay](#) – a guide to local history resources at Napier Libraries.

### **Biographies**

**Births** - [New Zealand Births, Deaths and Marriages](#)

**Burial records** - can state how many years a person resided in New Zealand.

**Business history** - annual reports, company files, correspondence, maps and records.

**Cemeteries** - [Hastings Cemeteries](#), [Napier Cemeteries](#).

**Chronologies** - e.g. [Two hundred years of New Zealand history, 1769-1969: a sampler chronology](#) compiled by A. W. Reed - HC 993 REE

**Church histories** – e.g. [Tracing family history in New Zealand](#) by Anne Bromell – GN 929.1BRO, page 55-60 for a summary of New Zealand church history records.

**Club histories** - e.g. [Park sensations, the: a story of the Napier Park Racing Club and famous Greenmeadows](#) by Joe Lorigan - HCHB 798.4006093131 LOR.

**Community archives** – e.g. [Wellington City Recollect](#)

**Court records, minutes and proceedings** - e.g. property disputes, layout of roads, deed and will entries, estate inventories. [Courts of NZ finding out about a case](#).

**Cyclopedia** – e.g. [The Cyclopedia of New Zealand, Industrial, Descriptive, Historical, biographical, facts, figures, illustrations](#) – HCHB 993.1 CYC. Published in 6 volumes between 1897 and 1908 – these contain useful biographical and business information source with a large section of early photographs, but since people and businesses paid to be included there are many omissions and a fair amount of 'spin'!

**Death notices** - recorded from the Hawke's Bay Today onto Napier Library's catalogue.

**Deaths** - [New Zealand Births, Deaths and Marriages](#)

**Dictionaries** - e.g. [Dictionary of New Zealand Biography](#) - HC 920.0931 DIC.

**Directories** - these street directories are a rich source of primary information, names, and occupations:

- [Harding's almanac, diary, year-book, local guide, and directory for the year of our Lord](#) - HCHB 919.313 HAR
- [Hawke's Bay almanac and directory, the](#) - HCHB 919.313 HAW



- [Stones' Wellington, Hawke's Bay and Taranaki commercial, municipal, and general directory and New Zealand annual](#) - HCHB 380.0993 STO
- [Wise's New Zealand Post Office directory. v. 2. Wellington - Hawke's Bay – Taranaki](#) - HCHB 919.31 WIS

*Dutch* - [Wie was wie](#) – Dutch genealogy site.

*Electoral rolls* - can help trace when a person was first entered on to the roll.

*Essays* - e.g. [French footprints on New Zealand soil](#) by John Dunmore - HC 993.00441 FRE, includes *The Marists in Hawke's Bay*.

*Facebook* – e.g. [Old Napier Facebook Group](#)

*Genealogies* - e.g. [A short account of early days in Wellington, Westshore and Eskdale, as experienced by the two first families who came to Napier](#) by Robina Agnes Roe - HCH 993.46 ROE.

- [Cyndi's list](#) – a highly respected directory of free genealogical resources & online databases.
- [RootsWeb](#) – a genealogy website.
- [The Hawke's Bay branch of the New Zealand society of Genealogists](#)
- [World Gen project](#) - genealogical resources by country and region.

[Google news archive](#) - millions of archived newspaper pages.

*Government* - central, local and regional – they may have rare and unofficial material donated by individuals, account books, and photographs.

*Graves* – e.g.

- [Billion Graves](#) – headstone records.
- [Find a Grave](#) – locate ancestors in cemeteries.

[Hawke's Bay Knowledge Bank](#) – an ever growing digital record of HB and its people.

*Historians* – local historians may also know who is searching in a similar field.

[Hocken Library](#) - contains mostly original material and information.

*Illustrations* – e.g. [Illuminations: icons and objects from the life of Suzanne Aubert](#) by Sister Josephine Gorman - HCHB 255.97 AUB

[Immigrant ancestors project](#)

*Interlibrary loan* - service enables you to borrow books not available in your local library.

[Internal Affairs](#) - to follow up with certificates and printouts.

[Land Information New Zealand](#) - (previously Lands and Survey Department) for house deeds, records Crown land allotments at Napier in 1855.

*Letters and diaries* - [Cook and a hundred years after: catalogue of an exhibition of paintings, prints, documents, diaries, letters and other relics](#) - HC 993.02 NEW.

*Libraries* - provide a rich store of material relating to the area in the form of publications, with many putting their special collections of local history material into digital form and on-line.

[Maori voyaging patterns](#)

*Maps, atlases, gazetteers* - through comparing various surveys it can be revealed the extent of geographical change.

*Marriage* – e.g.

- Announcements in older local newspapers.
- Marriages - [New Zealand Births, Deaths and Marriages](#)
- [New Zealand Marriages Index](#)
- [Varcoe's Marriage Index](#)

*Military files and base records* – [Auckland Museum Cenotaph](#)

*Museums* - contain a wide variety of material on local places, people, and events.

[National Archives](#)

[National Library of New Zealand](#)

[National register of archives & manuscripts](#)

[New Zealand Card Index](#) - main geographical focus is Auckland from the 1950's to 1996.

[New Zealand Electronic Text Collection \(NZETC\)](#)

[New Zealand Gazette](#) - e.g. covers HB land district schedules, land taken for public works 1942, certificate of execution - Wata, Makoare, and Ahuriri transaction report 1951.

[New Zealand Official Yearbook](#)

*Newspapers and periodicals* - from an archival point of view, their greatest asset is often a comprehensively indexed collection of press cuttings from local, newspapers going back to before the First World War. Source for local history research of primary material, including society columns, which show the lives of local residents; public announcements; and advertisements which show what residents found important and interesting.

*Novels* - fiction has potential as source material, e.g. [Earthquake town](#) by Beverley Dunlop - HCHB 823 DUN.

*Obituaries* - in local newspapers, also see Deaths.

*Oral histories* - a treasure house for researchers.

*Paintings, drawings, prints and portraits* of formal groups especially for the early colonial landscape from the late 1850's, can be used to verify other sources of information.

*Parish records* – e.g. [Freereg](#) records from UK Parishes.

*Photographs* - portraits of family groups, e.g. [Footprints](#) by Paul Campbell – HHB 993.469 CAM.

*Postal and postcard histories* – e.g. [Postcards of Hawke's Bay New Zealand](#) edited by John Paston - HCHB 741.683 POS.

*Railways* – e.g. [Napier-Gisborne railway, the: the story of its construction and development](#) by A. C. Bellamy - HCHB 385.099346 BEL.

*School histories and centennials* – one of the most common types of local history, e.g. [Napier Main School \(Central School\) diamond jubilee: 1879-1939: souvenir booklet](#) - HCHB 372.9931 NAP.

*Scottish* - [Scotland's People](#)

*Shipping* – shipping, passenger and naturalisation records will provide a year of arrival, e.g.

- [White wings: immigrant ships to New Zealand, 1840-1902](#) by Henry Brett - HC 387 BRE.
- *Comber Index* - shipping to New Zealand 1839-1989 on microfilm.

*Theses* – university theses are often useful sources of information, e.g. [Auckland University](#).

*Timeline* – e.g. [Timeline of Napier and Hawke's Bay](#), a partial timeline of Napier and Hawke's Bay 1769-1974.

*Volunteer groups* – e.g. firefighting, school gatherings, lodge members, sports teams, school reunions.

[War Census](#)

*War memorials* – e.g. South Africa Memorial Statue.

*Whaling* - e.g. [Sealers & whalers in New Zealand waters](#) by Don Grady - HC 639.2009931 GRA.

### Further Assistance:

We hope you enjoy discovering Napier's rich history. If you would like any help finding your way through our resources, we have a [Research Enquiry](#) service available, or you can ask our friendly library staff.

The Research Team  
Napier Libraries  
[www.napierlibrary.co.nz](http://www.napierlibrary.co.nz)

